



# MODULAR MULTIPLE 3-WAY VALVES

## R-351

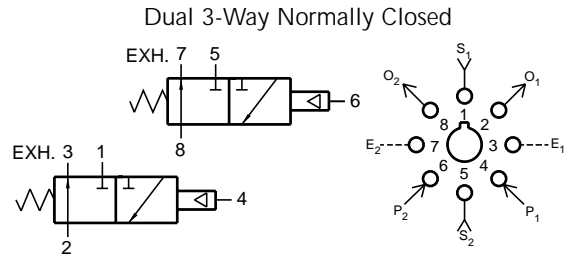
### Dual Normally Closed 3-Way Valve

#### Features:

- Micro gap construction - snap action and no blow by
- Two independent valves in one module
- Saves space

#### Performance:

Flow (SCFM @ 100 psig).....9  
 Pilot Pressure (psig) minimum.....40  
 Temperature.....32 to 180° F  
 Working pressure.....0 to 150



#### Description:

R-351 is a dual element combination of 2 independent, spring return, 3-way valves in a single manifold, set-up for normally-CLOSED usage only. Ports 3 and 7 are exhausts to atmosphere and cannot be restricted.

## R-352

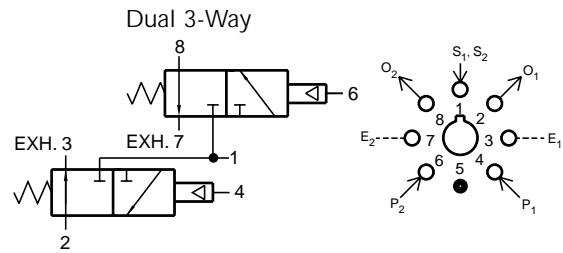
### Dual 3-Way Valve

#### Features:

- Micro gap construction - snap action and no blow by
- Two independent units in one module
- Common supply eliminates extra piping

#### Performance:

Flow (SCFM @ 100 psig).....9  
 Pilot pressure (psig) minimum.....40  
 Temperature.....32° to 180° F  
 Working pressure.....0 to 150



#### Description:

R-352 is a dual element combination consisting of 2 independent, spring return, 3-way normally closed valves with a common inlet. Ports 3 and 7 are exhausts to atmosphere, and can not be restricted.